



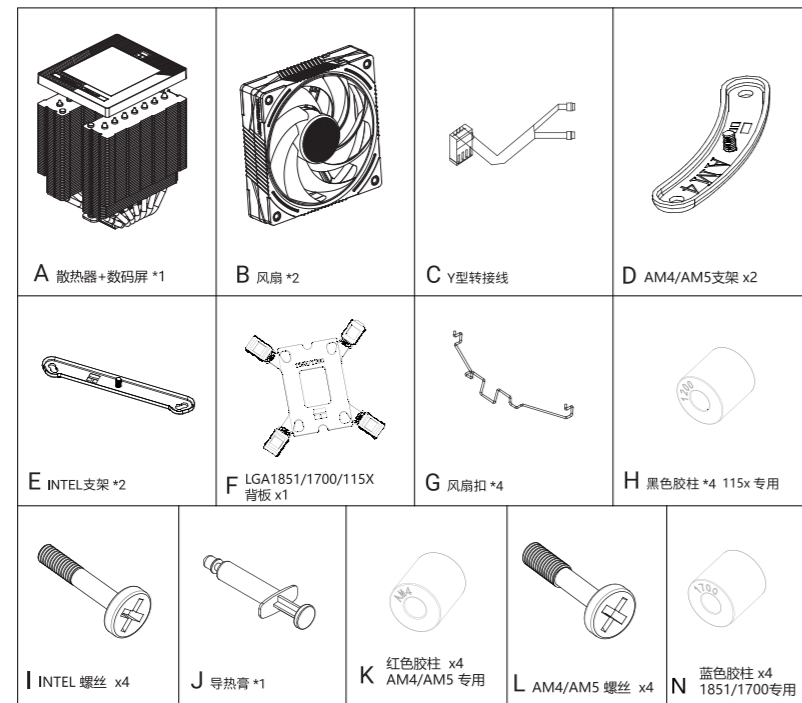
安装说明

Phantom Spirit 120
DIGITAL / VISION
系列

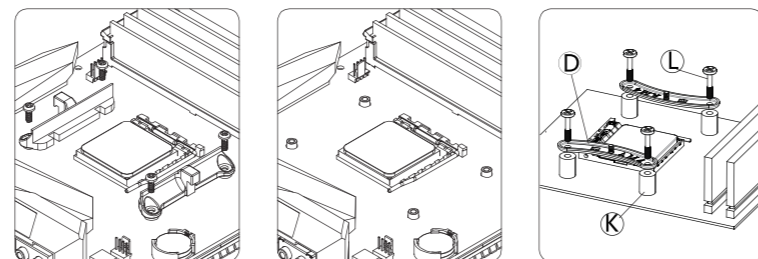
! 安装前请先去除铜底保护膜

www.thermalright.com

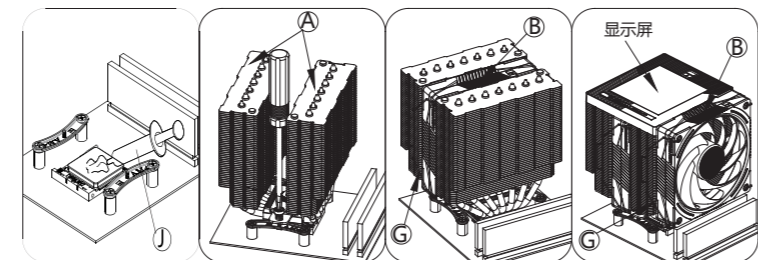
配件清单



AMD AM4/AM5

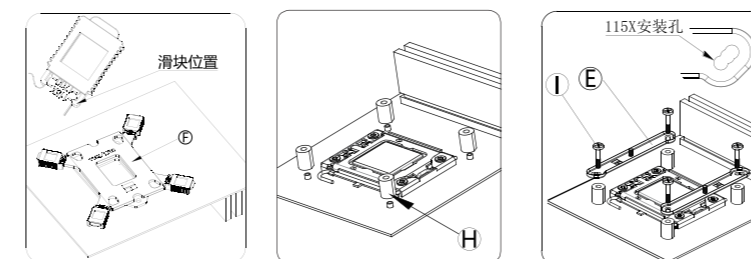


移除AMD原装塑胶支架, 保留背板,使用AM4/AM5螺丝将支架锁紧到主板原配背板

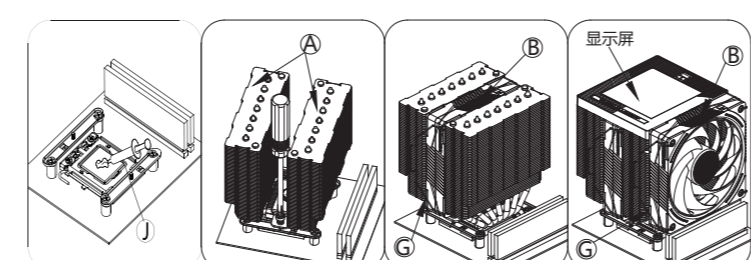


涂好导热膏, 拿掉散热器上的显示屏, 然后用螺丝刀锁好主体, 取其中一个风扇对齐散热器鳍片高度用风扇线扣固定, 将数码屏盖回散热器上, 再用风扇扣将另一风扇对齐数码屏固定。

INTEL 115X/1200

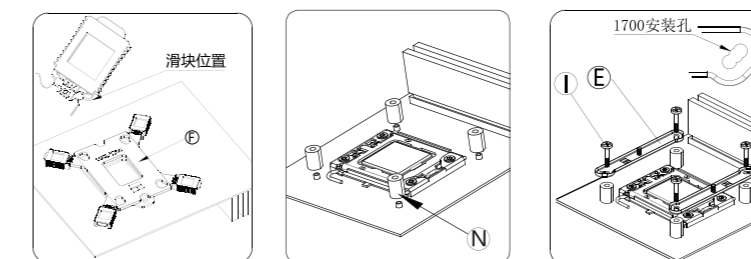


将背板【F】推到115X位置放置在主板背面,然后正面放置胶柱【H】,扣具【E】,再用螺丝【I】固定住扣具。

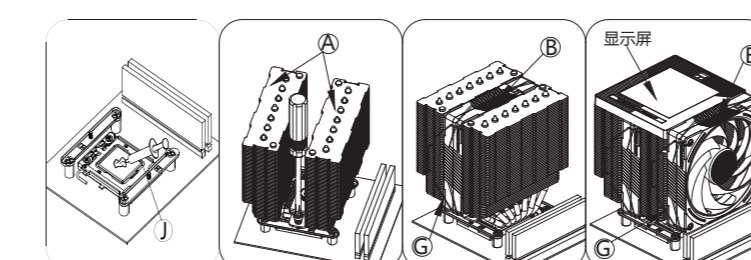


涂好导热膏, 拿掉散热器上的显示屏, 然后用螺丝刀锁好主体, 取其中一个风扇对齐散热器鳍片高度用风扇线扣固定, 将数码屏盖回散热器上, 再用风扇扣将另一风扇对齐数码屏固定。

INTEL 1700/1851



将背板【F】推到1851/1700位置放置在主板背面,然后正面放置胶柱【N】,扣具【E】,再用螺丝【I】固定住扣具。

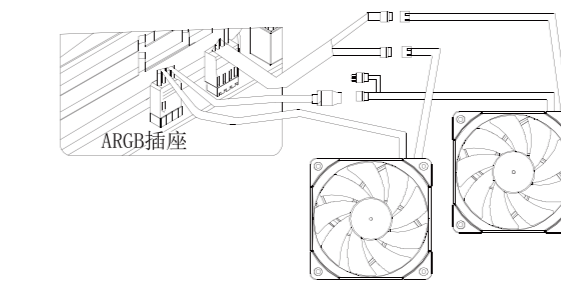


涂好导热膏, 拿掉散热器上的显示屏, 然后用螺丝刀锁好主体, 取其中一个风扇对齐散热器鳍片高度用风扇线扣固定, 将数码屏盖回散热器上, 再用风扇扣将另一风扇对齐数码屏固定。

风扇接线

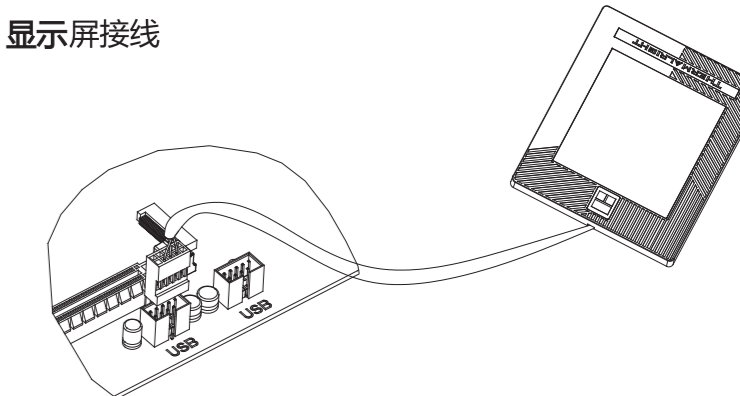


将风扇4针PWM接头插入主板CPU_FAN插座, 如果使用双风扇, 请使用Y型转接线。



如果风扇有ARGB灯效, 请将ARGB 3针(5V) 插入主板对应ARGB灯效插座或者控制器, 多风扇之间可串联同步。

显示屏接线



- 1.显示屏的供电和数据通信传输均由主板 9针USB接口提供。软件安装前请确认接线完整
- 2.软件可在官网下载: <https://www.thermalright.com.cn/support/download/> 解压并双击安装程序安装
- 3.桌面双击软件快捷方式图标运行软件
- 4.本液晶屏的实时数据监控/数据传输/开启关闭等功能均由软件控制。安装完成默认随电脑开机启动, 并在任务栏常驻后台, 请勿关闭/强制退出。



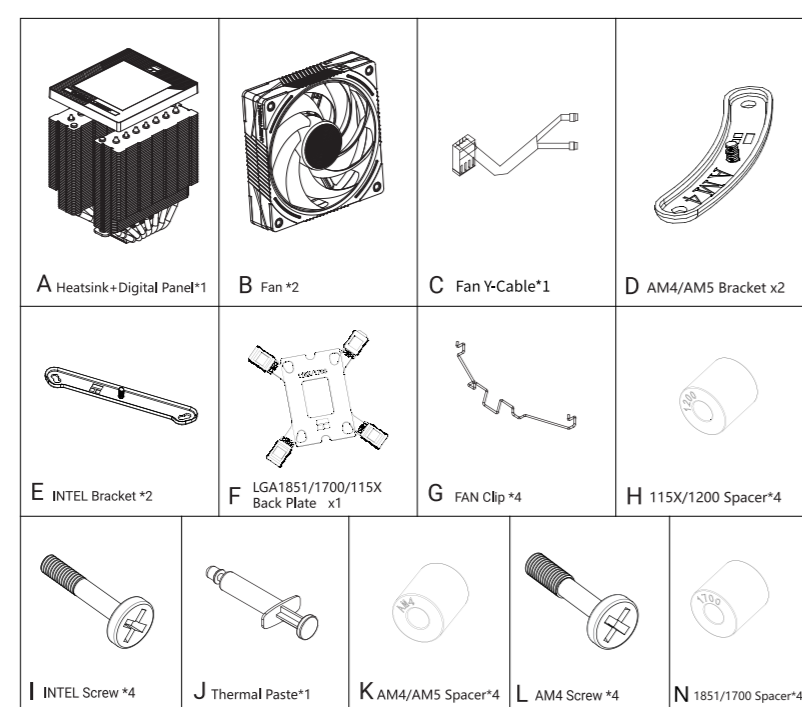
INSTALLATION GUIDE

Phantom Spirit 120
DIGITAL / VISION
Series

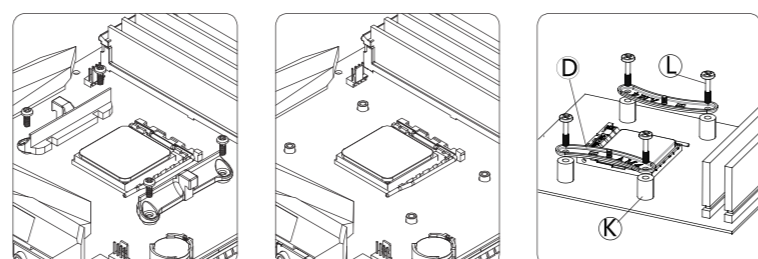
Please remove protective sticker before install

www.thermalright.com

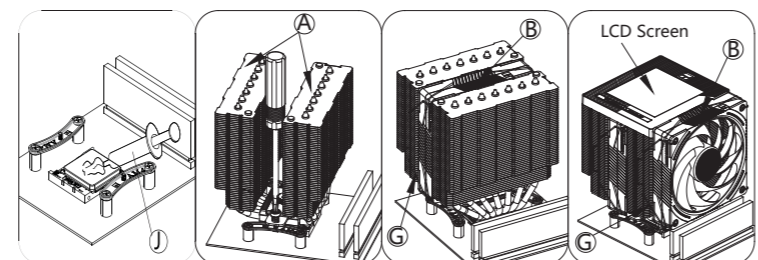
Parts List



AMD AM4/AM5

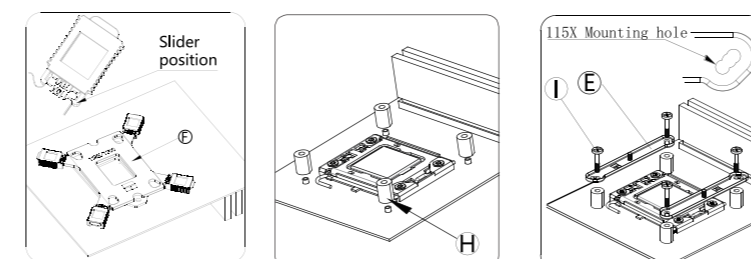


Remove AMD plastic brackets, KEEP the backplate, install AM4/AM5 metal brackets on AM4/AM5 spacers with AM4/AM5 screws.

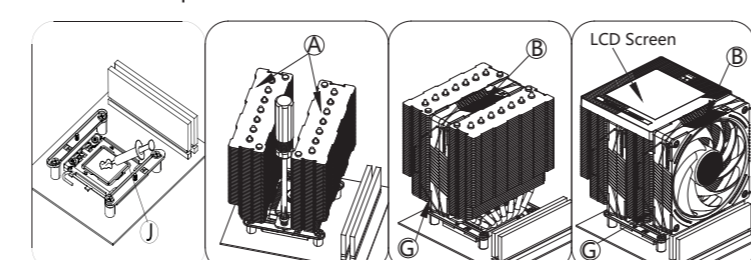


Apply thermal paste on CPU, install the heatsink with a screw driver, and install fans on heatsink with fan clips, Place LCD panel on top of heatsink.

INTEL 115X/1200

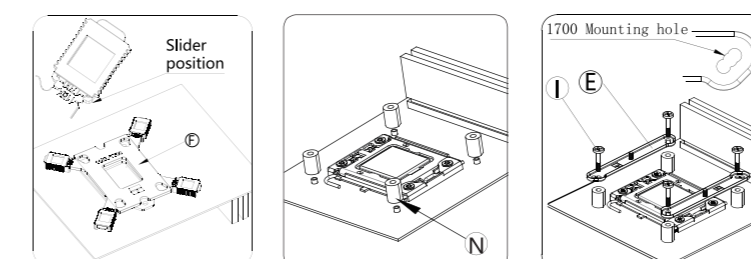


Adjust backplate mounting hole position, install backplate from back side of motherboard, place LGA115X/1200 spacer from front side, install intel brackets on spacers with intel screws.

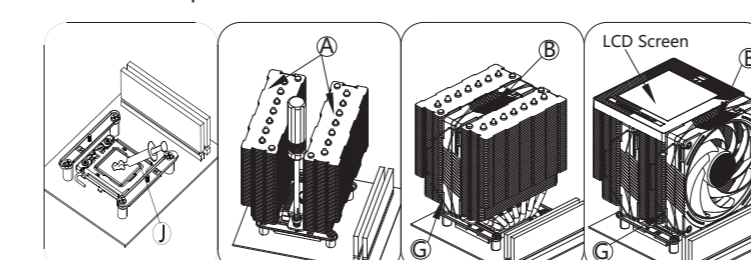


Apply thermal paste on CPU, install the heatsink with a screw driver, and install fans on heatsink with fan clips, Place LCD panel on top of heatsink.

INTEL 1700/1851

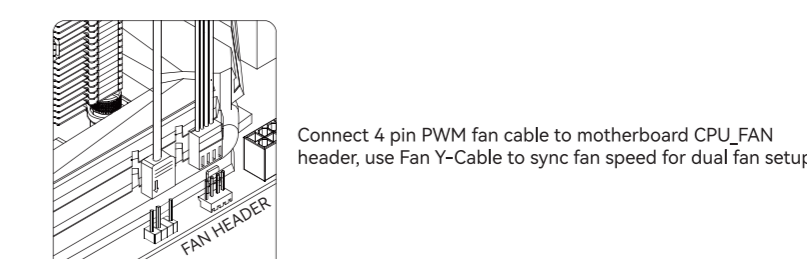


Adjust backplate mounting hole position, install backplate from back side of motherboard, place LGA1851/1700 spacer from front side, install intel brackets on spacers with intel screws.

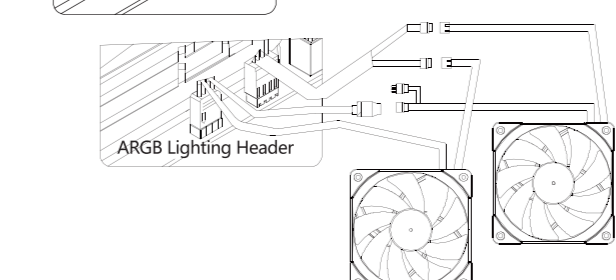


Apply thermal paste on CPU, install the heatsink with a screw driver, and install fans on heatsink with fan clips, Place LCD panel on top of heatsink.

Fan Wiring

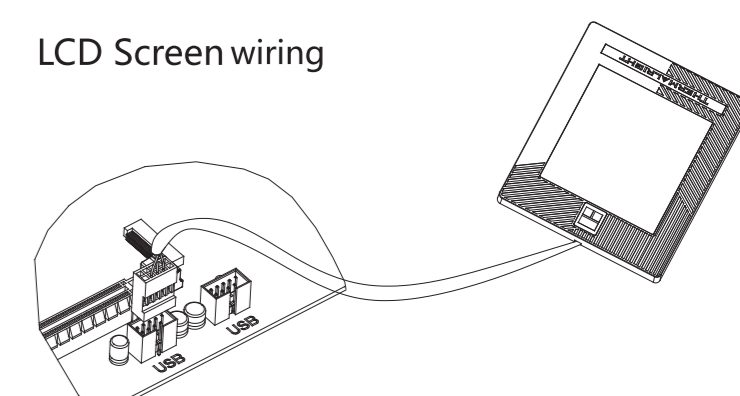


Connect 4 pin PWM fan cable to motherboard CPU_FAN header, use Fan Y-Cable to sync fan speed for dual fan setup.



For Fans with ARGB lighting, To control the ARGB lighting, connect ARGB lighting cable (3-pin +5V) to motherboard ARGB lighting header or ARGB lighting controller, lighting effects can be sync by connecting fan lighting headers with each other

LCD Screen wiring



1. Check USB cable connection between motherboard 9 pin USB2.0 socket and digital display.
2. Download software at: <https://www.thermalright.com.cn/support/download/> Unzip setup file and start install by double click setup.
3. After install completed, double click shortcut icon on desktop to run software.
4. All functions on Digital screen are controlled by software, and software will startup at OS boot. Please do not exit the program.